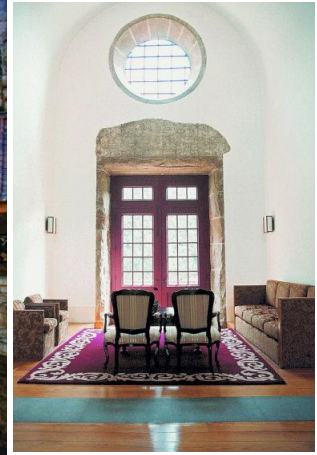


Guimarães, the Birth of Nation



General Info

It is a must to visit the City of Guimarães, birthplace of the Portuguese nationality, whose Historic Centre was recently classified a UNESCO's World Heritage Site. A combined program featuring guided pedestrian tour of the ruins of Castle, the XVIth century Ducal Palace, time to stroll through the medieval streets and look for some antiques, bargain traditional commerce shops, enjoy a cup of coffee in the old squares.

Coffee break at the terrace of the Medieval Square, followed by lunch at local restaurant to taste the region specialities. Arrival to Porto at 4pm.

Price per person: 100€

Minimum participants: 6

Maximum participants: 6

Includes:

- . All taxes
- . Transportation in 6 seat van with English speaking tourism driver
- . Entrance fee at Paço dos Duques de Bragança
- . Coffee break in the city centre
- . 3 course menu lunch with wines and beverages included



associação de turismo do porto
porto convention bureau

www.portocvb.com

TURISMO DE
PORTUGAL



THE

THE HOUSE OF EVENTS

RUA VIEIRA PORTUENSE, 64
P-4050-624 PORTO – PORTUGAL

T +351 228 348 940
info@the.pt

www.the.pt