

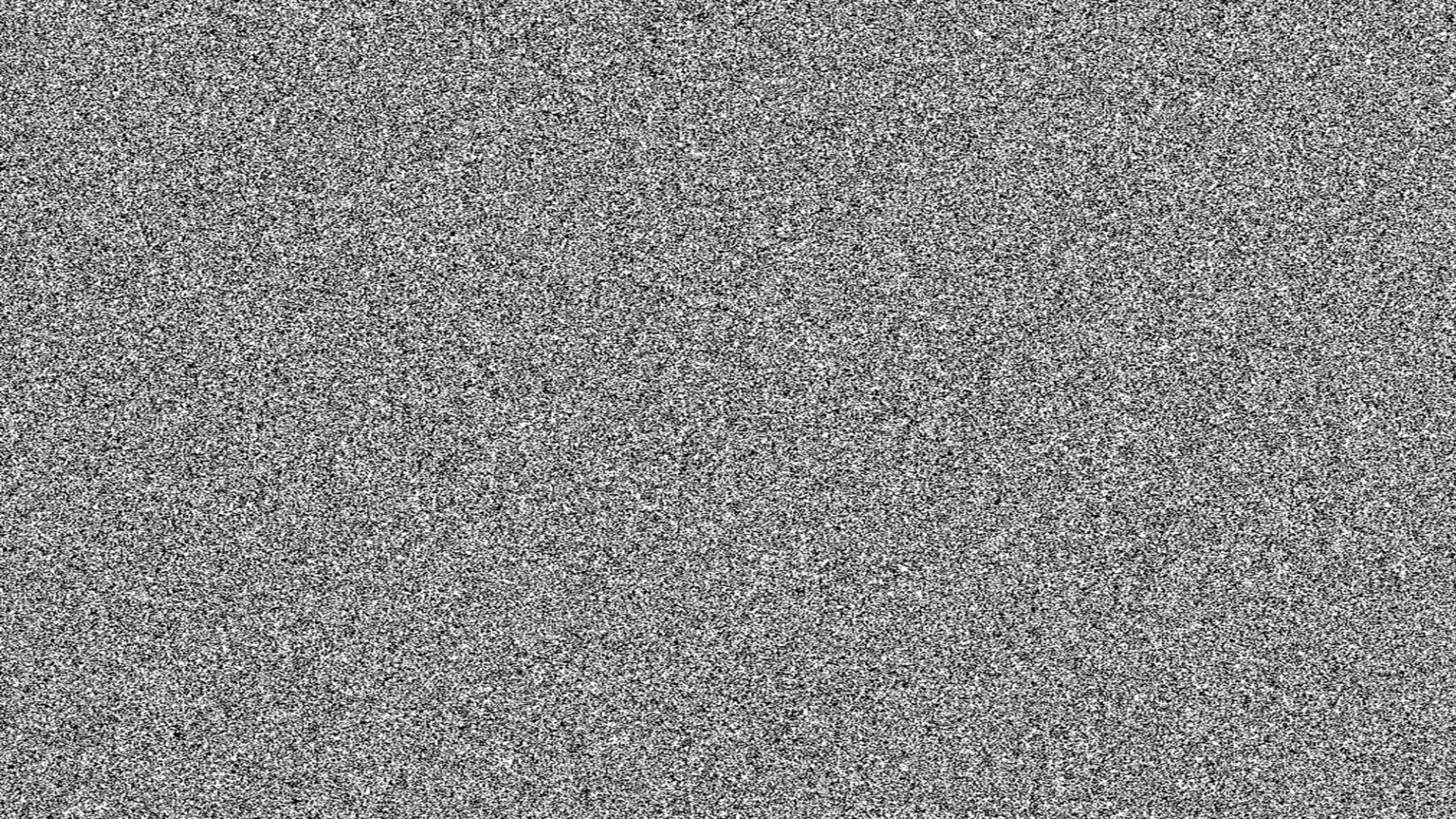
A group of children in school uniforms are seen from behind, reaching out to touch a large, interactive globe of the Earth. The globe is the central focus, showing continents and oceans. The children are of various ages and are engaged with the display. The background is dark, suggesting an indoor museum or exhibition space.

MANCHESTER
1824

The University of Manchester

Lessons from 10 years of social responsibility at The University of Manchester

Dr Julian Skyrme, Director of Social Responsibility



Structure

1. Past: 200 years of social responsibility
2. Purpose
3. Place
4. People
5. Plan & priorities
6. Programmes
7. Performance



Porto versus Manchester

1. Second City

2. Football

3. Party cities





SUPER BOCK

SABON AUTÉNTICO

LAGER-BEER-BIÈRE-CERVEZA

PRODUCE OF PORTUGAL
1877

SUPER BOCK

Super Autêntico

ESTABLISHED IN 1877

SUPER BOCK

SUPER BOCK

The Daily Telegraph

Pressure on Met over pictures of PM raising a toast in No10



UK in race to track new monkeypox patients



Mirror

£5 off when you spend £20 at dobbies

INSIDE: 8-page special full of amazing recipes

Double Daily 100

Lockdown party photos hit PM



How did he get away with this?



The new Rose

Yasmin Finney on acting, identity and Doctor Who

Open wide The painful truth about Britain's dentistry crisis

The Guardian

Fresh danger for Johnson over No 10 drinks pictures



Life in jail for Russian soldier who shot civilian

Life in jail for Russian soldier who shot civilian

THE TIMES

Chelsea Flower Show Queen buzzes in by buggy

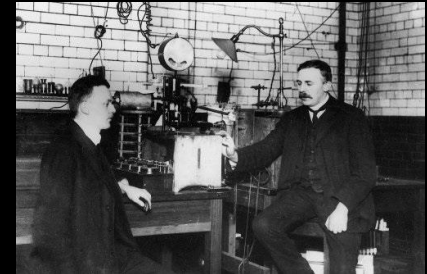


Partying PM 'misled Commons'

Johnson pictured raising glass at lockdown drinks for aide @ Star Group was 'pressured' to drop report in No 10 meeting

1) Past: Knowledge, Wisdom, Humanity

- Established in 1824, England's first 'civic' university.
- Open to all regardless of "rank, religion or status"
- Born of Manchester's industrial liberal class:
 - World's first industrial city (Cottonopolis)
 - World's first passenger railway
 - Home to global Cooperative movement,
 - Birthplace of British trade unionism
 - World's first professional football league
 - Women's suffrage – the Pankhursts
- Built on German model of practical research university
- Shaped 20th/21st centuries with iconic discoveries: split atom, developed computer memory, isolated graphene
- Today's motto based on three concepts: Cognitio (knowledge); Sapientia (wisdom); Humanitas (humanity)



2) Purpose: our core goals



1

Research and discovery

UK Top 5 for research power
National and global player



2

Teaching and learning

Most UK applicants
Most popular among UK
graduate recruiters



3

Social responsibility

Unique goal
Top 10 globally for SDGs
'19/'20/'21/'22/'23

2) Purpose: Why prioritise social responsibility?

1. **In our DNA:** made sense historically
2. **Language matters:** counterweight to neo-liberal, individualistic model
3. **Rallying call:** What we're *good for*, not *good at*
4. **Public benefit** versus scepticism and populism
5. Makes **educational sense**



2) Purpose: how we deliver social responsibility (& SDGs!)

Social responsibility is the contribution we make to society and the environment through our four core functions of research, learning, engagement and operations.

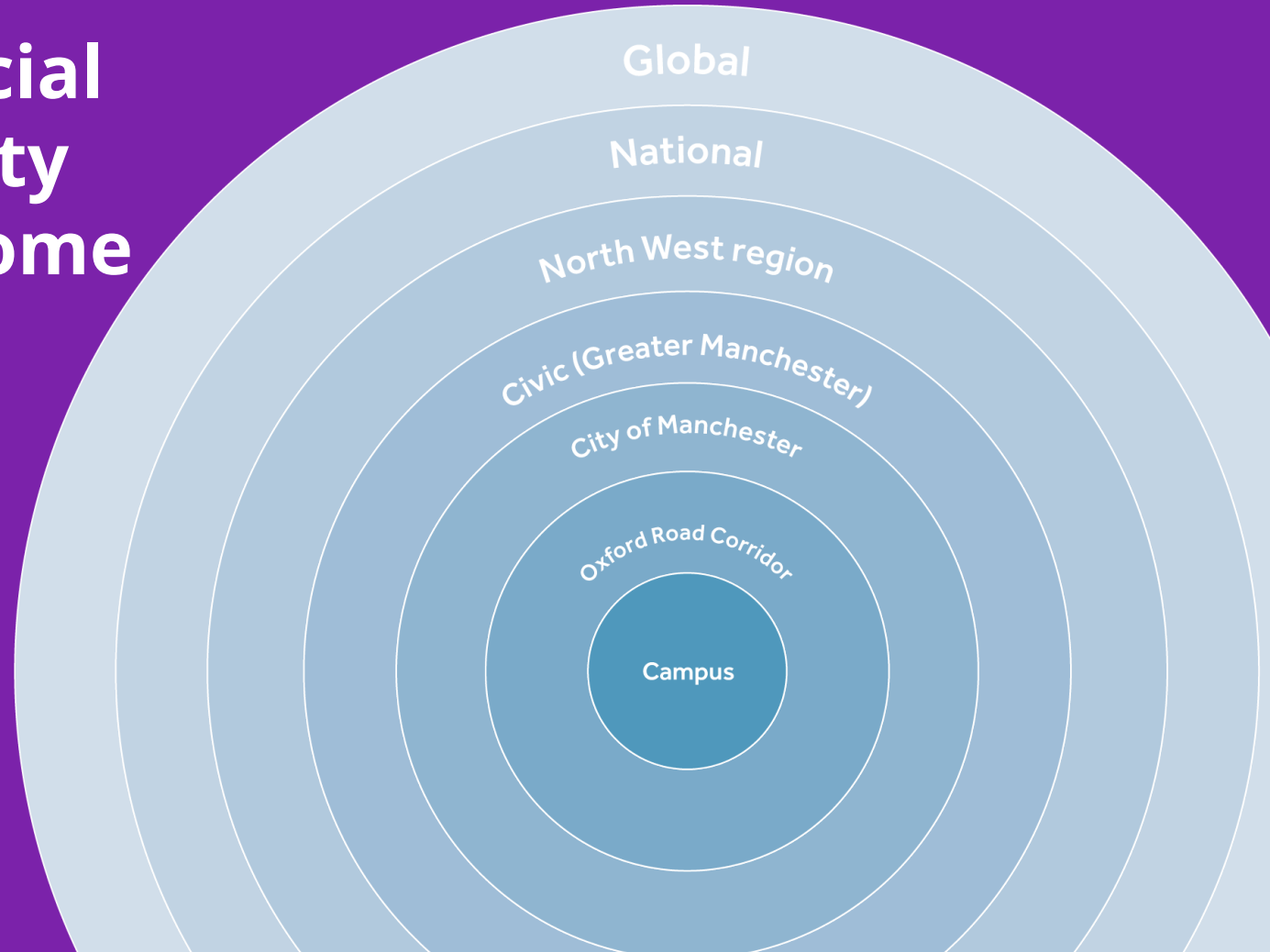
Social responsibility is both:

- a set of **values and a unifying theme** that give us purpose
- a set of **practical and measurable activities**



3) Place: Social responsibility begins at home

Our social responsibility work occurs globally, nationally, locally and on campus. The contribution and impact we make across our diverse communities in Greater Manchester is what we call civic engagement.



4) People

21 June 2010

New President and Vice-Chancellor for The University of Manchester

Professor Dame Nancy Rothwell has been appointed President and Vice-Chancellor of The University of Manchester.



Dame Nancy was selected following an international search which produced an impressive shortlist of candidates.

A distinguished Life Scientist, Dame Nancy has been a member of staff at the University since 1987 and Deputy President and Deputy Vice-Chancellor since 2007.

She will take-up her post on 1st July 2010 succeeding Professor Gilbert who was the inaugural President of Manchester, which was established following the merger of the University of Manchester and the University of Victoria.

Dame Nancy becomes the first woman to lead The University of Manchester, succeeding her predecessor institutions.



MANCHESTER 1824 The University of Manchester StaffNet

Working here News Departments Resources Community A-Z

StaffNet / News / News archive / March 2013 / University appoints full-time Director of Social Responsibility

University appoints full-time Director of Social Responsibility

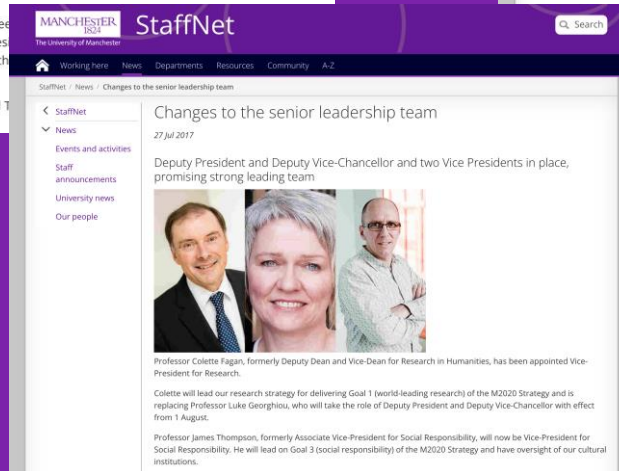
01 Mar 2013

Julian Skyrme has been appointed as the University's first full-time Director of Social Responsibility.



Prior to this, Julian led on widening participation and helped take Manchester to the top end of the Social Responsibility Index. Julian is a former senior manager at the University of Manchester and has a background in social responsibility.

Social Responsibility is one of the three strategic priorities of the University of Manchester, leading and coordinating the University's efforts in this area.



MANCHESTER 1824 The University of Manchester StaffNet




Working here News Departments Resources Community A-Z

StaffNet / News / Changes to the senior leadership team

Changes to the senior leadership team

27 Jul 2017

Deputy President and Deputy Vice-Chancellor and two Vice Presidents in place, promising strong leading team



Professor Colette Fagan, formerly Deputy Dean and Vice-Dean for Research in Humanities, has been appointed Vice-President for Research.

Colette will lead our research strategy for delivering Goal 1 (world-leading research) of the M2020 Strategy and is replacing Professor Luke Georghiu, who will take the role of Deputy President and Deputy Vice-Chancellor with effect from 1 August.

Professor James Thompson, formerly Associate Vice-President for Social Responsibility, will now be Vice-President for Social Responsibility. He will lead on Goal 3 (social responsibility) of the M2020 Strategy and have oversight of our cultural institutions.



MANCHESTER 1824 The University of Manchester StaffNet

Working here News Departments Resources Community A-Z Governance

StaffNet / News / Senior Leadership Team Appointments

Senior Leadership Team Appointments

27 Jun 2019

Professor April McMahon to be Vice President for Teaching, Learning and Students and Professor Nalin Thakkar to be Vice-President for Social Responsibility



The University is pleased to announce that after a competitive and international recruitment process from an exceptional field of candidates, we have appointed two highly talented and experienced leaders to join our Senior Leadership Team:

5) Plan and priorities: *Our future*

We have two publications that outline our vision and plan

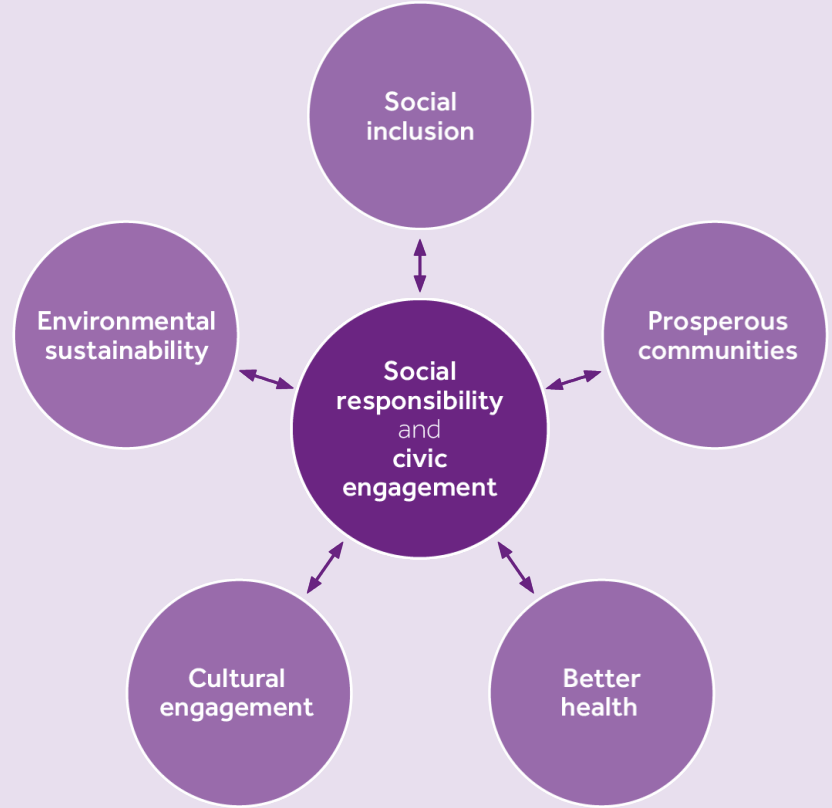


5) Plan

Social responsibility and civic engagement at a glance

These five priorities are underpinned by a focus on

- Partnerships
 - People
 - Processes
-



5) Plan: Partnerships, People, Processes

PARTERSHIPS

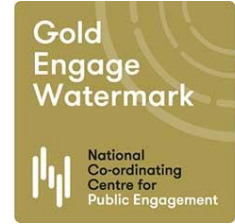
- Advancing local, national and global partnerships with public, private and VCSE sectors: GMCUA; GM Policy Hub; Oxford Road Corridor; Innovation GM, NCCPE, CUN, SDSN, USRN, Talloires
- Advancing the Sustainable Development Goals through all our work: research, teaching, engagement and campus operations

PEOPLE

Involving and engaging staff, students, alumni and public

PROCESSES

Focusing, measuring, communicating and celebrating our work



6) Programmes

We are committed to becoming a zero carbon university by 2038

We are divesting from fossil fuel and other carbon-intensive investments

We are an accredited Living Wage Employer

SOCIAL INCLUSION

As a global centre of research and teaching, and one of our city-region's largest employers, we're challenging the inequalities and prejudices that affect people's lives locally, nationally and globally.



WIDENING PARTICIPATION

We invest more than £15 million annually in financial support for students from disadvantaged backgrounds.



SCHOOL GOVERNOR INITIATIVE

We've helped more than 1,000 staff and alumni to contribute to education leadership.



EMPLOYMENT SUPPORT

We've supported more than 4,000 local people into work using The Works, our unique employment partnership.



EQUITY AND MERIT PROGRAMME

With support from our donors, we've helped more than 300 postgraduate students to lead on sustainable development in their own countries.

BETTER HEALTH

We're collaborating with the Greater Manchester Health and Social Care Partnership, NHS trusts and Health Innovation Manchester to tackle local and global health challenges through research, teaching and social responsibility initiatives.



GLOBAL PARTNERSHIPS

We're part of more than 50 healthcare partnerships in the Global South in support of UN SDGs.



EMERGENCY RESPONSE REGISTER

We created the UK International Emergency Trauma Register and deploy medical experts during overseas disasters.



HEALTH INNOVATION MANCHESTER

Our unique civic and academic collaboration to transform the health and wellbeing of Greater Manchester's 2.8 million citizens.



HUMANITARIAN AND CONFLICT RESPONSE

We partner with the WHO, Médecins Sans Frontières and the British Red Cross in our humanitarian and conflict response work.

ENVIRONMENTAL SUSTAINABILITY

We're leading the way to a more sustainable world through research, teaching, operations and engagement activities in areas such as climate change, population growth, rapid urbanisation, overconsumption, food and water security, loss of biodiversity and pollution.



DECARBONISATION

Our science has helped to create a pathway for Greater Manchester to reach zero carbon status by 2038.



RENEWABLE ENERGY

We lead the biggest research project into sustainable development of the world's dams.



PLASTIC POLLUTION

We've eliminated more than 250,000 pieces of avoidable single-use plastic, with more to come.



GREEN CAMPUS

We've planted more than 300 trees on campus and launched an interactive tree trail.

CULTURAL ENGAGEMENT

Our unique cultural institutions – the Whitworth, the John Rylands Research Institute and Library, Manchester Museum and Jodrell Bank Discovery Centre – are engaging audiences through their diverse collections, events, exhibitions, partnerships and inspirational spaces.



ENGAGING THE PUBLIC

Our bluedot festival brings together music, science and culture at Jodrell Bank Observatory, a UNESCO world heritage site.



GREATER INCLUSIVITY

We're investing in our Manchester Museum to create a more inclusive, caring and imaginative destination for all our visitors.



CARBON LITERATE MUSEUM

Ours was the world's first museum to receive a Carbon Literate Organisation Award for cultivating a low carbon culture.

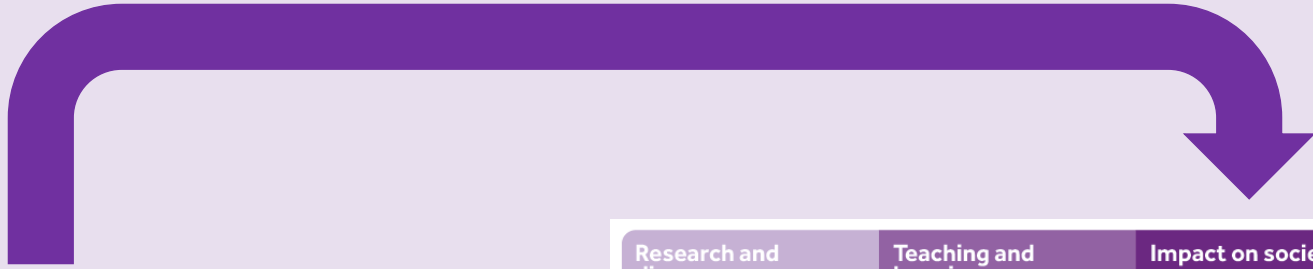


CULTURAL PARK KEEPER

Our Whitworth gallery employs the UK's first Cultural Park Keeper, responsible for outdoor activities focused on wellbeing.

Do outcomes matter?





7) Performance

Measure one

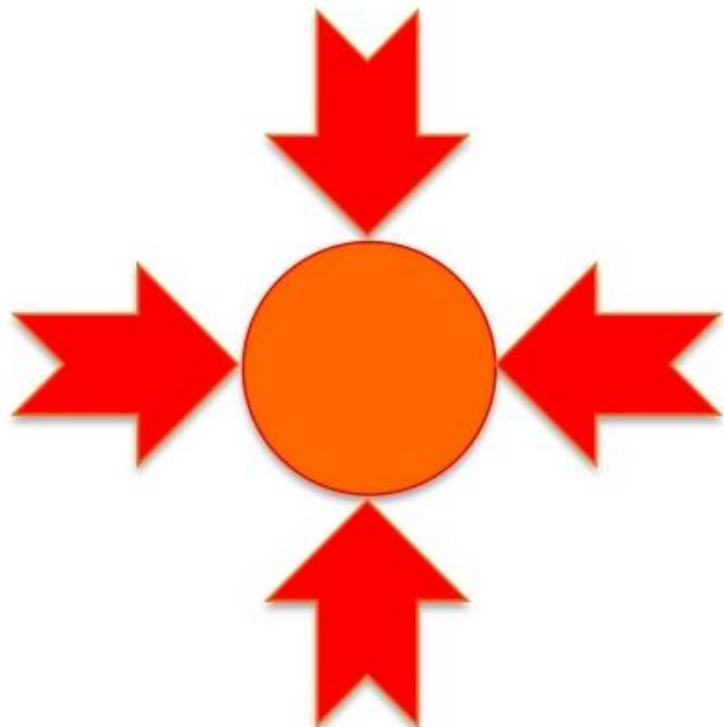
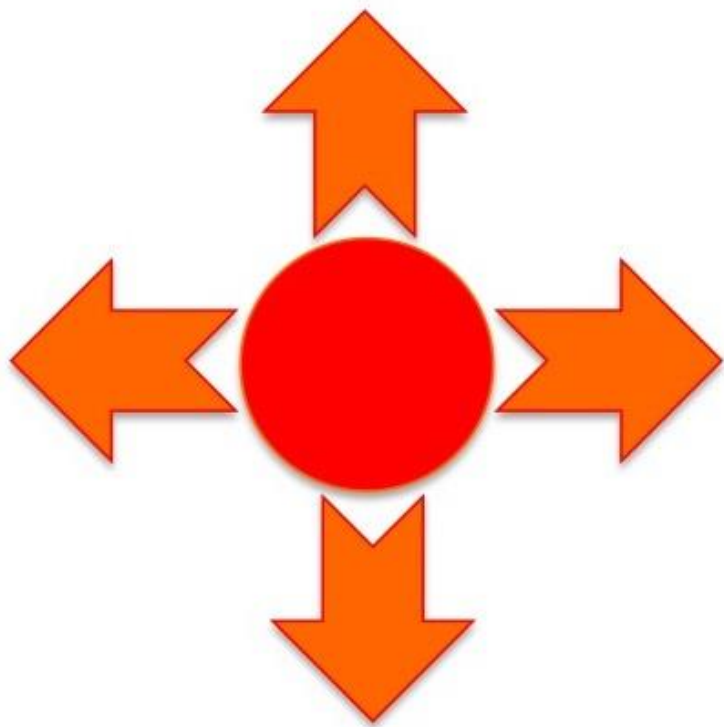
To perform in the top 2% of universities globally for impact towards the UN SDGs.

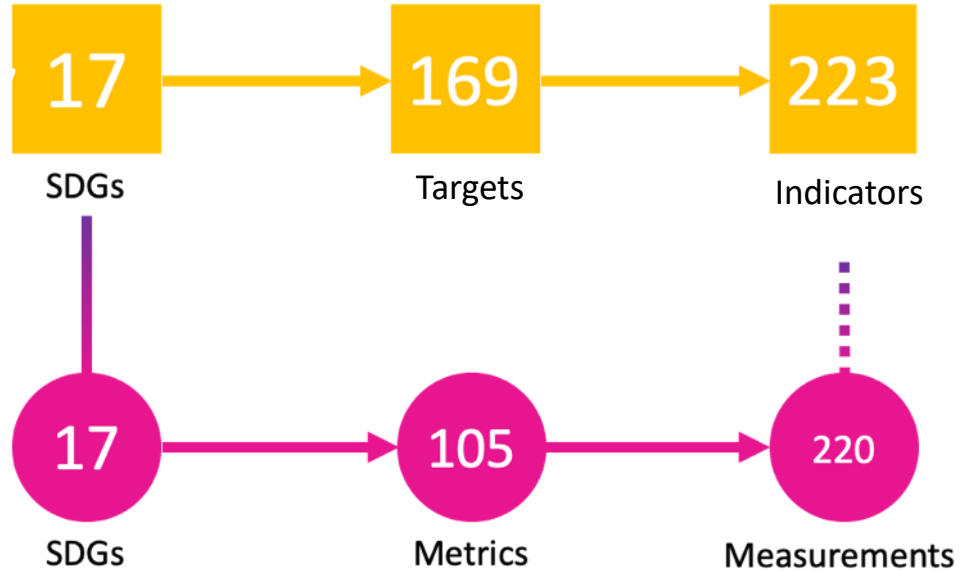
Measure two

To perform in the highest, top decile in UKRI/Research England's Knowledge Exchange Framework segment for 'Public and Community Engagement'.

Research and discovery The quality of our research will place us among the TOP 5 UK UNIVERSITIES IN THE RESEARCH EXCELLENCE FRAMEWORK 2027	Teaching and learning We will achieve 90% STUDENT SATISFACTION	Impact on society We will measure our success against a portfolio of measures and quality marks of SOCIAL, CULTURAL, ECONOMIC AND ENVIRONMENTAL IMPACT
Our people, our values 95% OF STAFF will say the University is a GOOD PLACE TO WORK	Our vision	Innovation We will be recognised as EUROPE'S MOST INNOVATIVE UNIVERSITY
Global influence We will be recognised as among the BEST UNIVERSITIES IN THE WORLD, IN THE TOP 25 in leading international rankings	Carbon reduction We will align to the city's decarbonisation pathway and 2038 TARGET FOR ZERO CARBON	Financial sustainability We will be generating at least a 5% ANNUAL FINANCIAL SURPLUS to reinvest in our core activities

Inside-out \leftrightarrow **Outside-in**





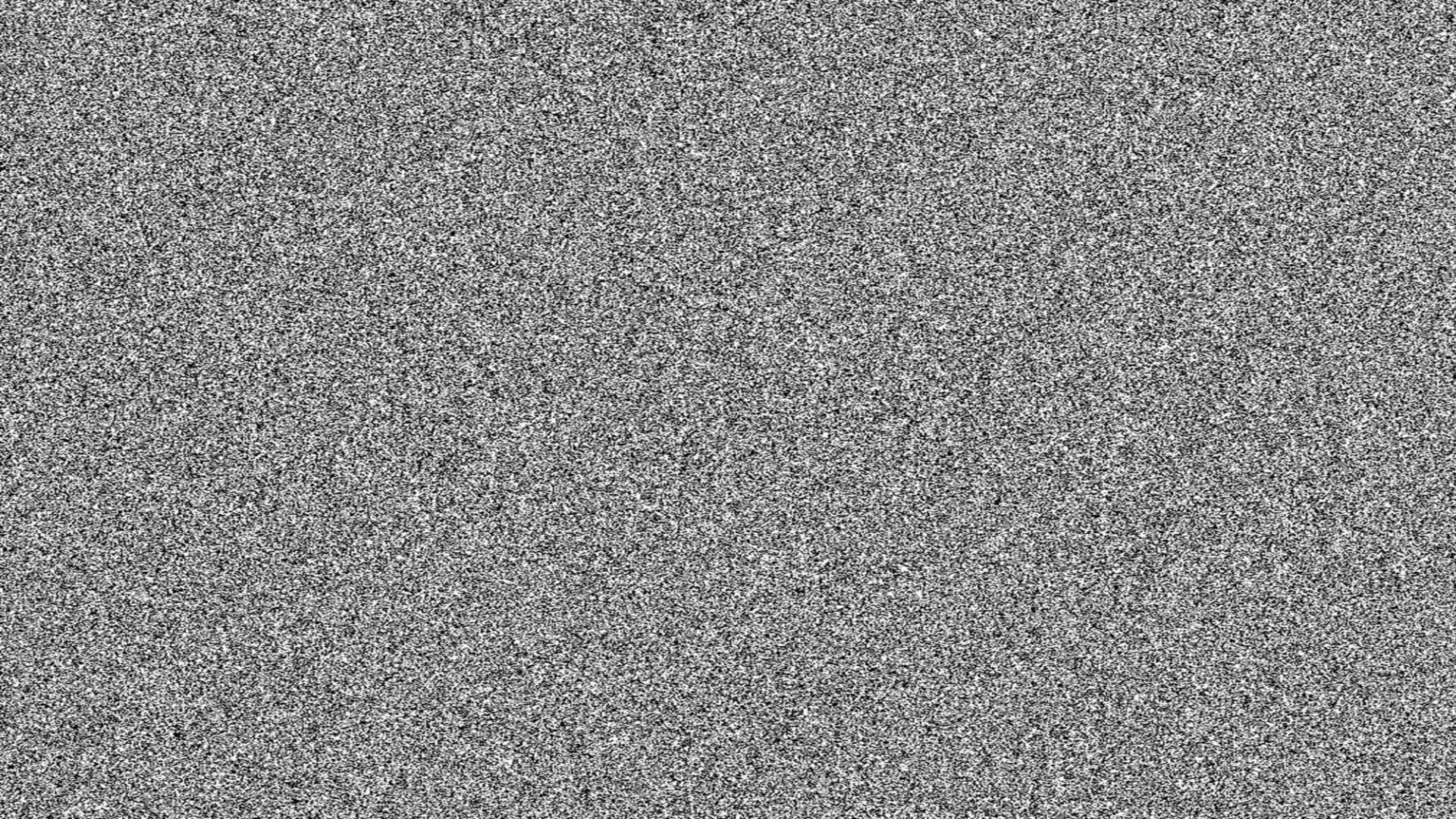
	2019	2020	2021	2022	2023
World ranking	3	8	1	9	2
European ranking	1	2	1	2	1
UK ranking	1	1	1	2	1
Total Entrants	450	768	1240	1406	1705
No. of countries	76	85	98	106	115
% world ranking (top 2% target)	0.66%	1.04%	0.08%	0.64%	0.12%

	2019	2020	2021	2022	2023
1	Uni of Auckland, NZ	Uni of Auckland, NZ	UNIVERSITY OF MANCHESTER, UK	Western Sydney Uni, Australia	Western Sydney Uni, Australia
2	McMaster Uni, Canada	Uni of Sydney, Australia	Uni of Sydney, Australia	Arizona State Tempe, US	UNIVERSITY OF MANCHESTER, UK
3	UNIVERSITY OF MANCHESTER, UK	Western Sydney, Australia	RMIT, Australia	Western Uni, Canada	Queens Uni, Canada
4	UBC, Canada	La Trobe Uni, Australia	La Trobe Uni, Australia	King Abdulaziz Uni, Saudi	Universitit Sains Malaysia
5	King's College, UK	Arizona State Uni, US	Queen's Uni, Canada	Universitit Sains Malaysia	University of Tasmania, Australia
6	Uni Gothenburg, Sweden	Uni of Bologna, Italy	Uni Wollongong, Australia	Uni of Auckland, NZ	Arizona State Tempe, US
7	KTH Royal Inst Tech, Sweden	UBC, Canada	Aalborg, Denmark	Queens Uni, Canada	University of Alberta, Canada
8	Uni of Montreal, Canada	UNIVERSITY OF MANCHESTER, UK	Uni College Cork, Ireland	Newcastle Uni, UK	RMIT, Australia
9	Uni of Bologna, Italy	King's College, UK	Arizona State Uni, US	UNIVERSITY OF MANCHESTER, UK	Aalborg, Denmark
10	Uni of Hong Kong	RMIT, Australia	Uni of Auckland, NZ	Hokkaido Uni, Japan	University of Victoria, Canada

Lessons learned

1. **Past:** we all have our histories and contexts
2. **Purpose:** the power of strategy; 'outside in'
3. **Place:** the power of place, 'glocal' institutions
4. **People:** Academic & professional leadership
5. **Plan and priorities:** focus and hold mirror up
6. **Programmes:** the power of partnerships
7. **Performance:** measuring what we do







GET IN TOUCH

julian.skyrme@manchester.ac.uk

Director of Social Responsibility

nalin.thakker@manchester.ac.uk

Vice-President for Social Responsibility

socialresponsibility.manchester.ac.uk
